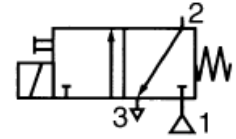


Description:

- Compact solenoid valves for assembly directly on a single-acting pneumatic actuator (cylinder, valve, etc.)
- Short response time
- Easy installation (supply connection, valve body, coil and cable socket can be rotated 360°)
- Compact type of construction
- Integrated exhaust air restrictor
- Manual override


General:

Medium *	Air, filtered
Pressure difference	See characteristics valve body [1 bar = 100 kPa]
Response time	10 to 20 ms

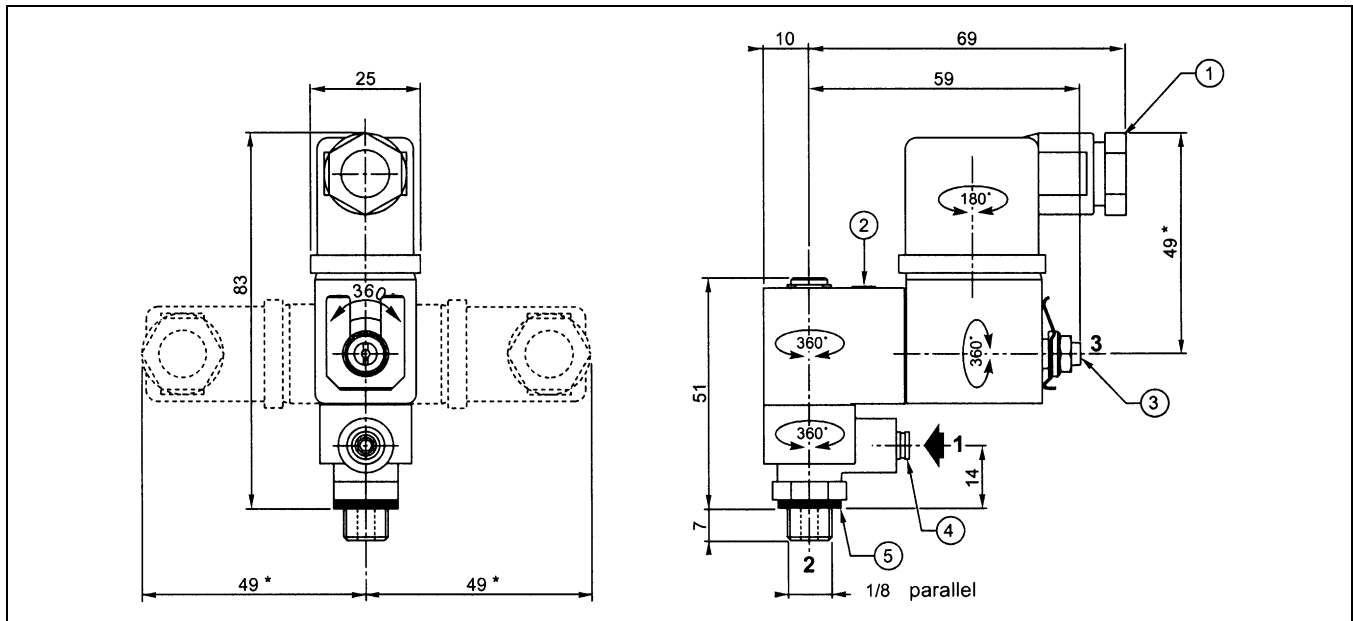
Parts in contact with the medium:*

Housing	Polyamide (glass fibre-reinforced)
Guide pipe	Brass
Armature of magnet and counter-armature	Stainless steel
Springs	Stainless steel
Valve seat	PA + Stainless steel
Seals and valve disc	NBR
End ring	Copper
Insulation class	F
Electrical connection	Device socket 11 mm, industry standard B
Connection 1	Plug connection for hose outside \varnothing 4 mm
Connection 2	G 1/8 thread
Connection 3	M5 (Vent port)

* The resistance of the parts in contact with the medium must be checked separately.



Dimensions:



- ① Cable socket: size 22, can be rotated 180°
- ② Manual override (latching)
- ③ Adjustable exhaust air restrictor
- ④ Port for compressed air supply with plug connection for hose \varnothing 4 mm external
- ⑤ Screw plug

Solenoid valves for mounting directly on the actuator, normally closed

Art. No.	Type No.	Thread	Sealant	Operating pressure min. / max. (1) bar	Medium temperature min. / max. (2) °C	Weight * kg
102967	108.01	G 1/8	NBR	0 / 10	-10 / 60	0.175
102968	108.02	G 1/8	NBR	0 / 10	-10 / 60	0.175

* Inkl. Solenoid and connector

(1) For detailed pressure information each medium, please see characteristics valve body.

(2) At temperatures below zero the medium may freeze and damage the valve.

Characteristics valve body:

∅ DN	Flow coefficient (Kv)				Perm. differential pressure		(M)	Exhaust air restrictor	Solenoid valve Art. No.	
	l/min at 6 bar		m ³ /h		min.	max.			~	=
2 <-> 1	2 -> 1	1 -> 2 -> 3	2 -> 1	1 -> 2 -> 3						
1.2	0.5	0.7	0.03	0.04	0	10	λ	With	102967	102968
								Without	On request	On request

Electrical data:

Coils Art. No.		Power					Ambient Temperature of magnet
		Pickup	Holding		hot / cold		
230 V	24 V DC		~	~			
118753	118749	6	3.5	2.5	2.5	3	[C]
118745	118742	12	6	4	5	6.9	-10 ° to 60 °

Special versions (on request):

- Other voltages or frequency on request
- Cable socket with LED and protective circuit

Handling:

- Any mounting position
- Installation and maintenance instructions enclosed with each valve
- Port (1) with plug connection for howe & 4 mm external
- Port (2) with G 1/8 thread
- Vent port (3) with M 5 thread or exhaust air restrictor
- Body can be rotated 360° about port 2
- Magnet can be rotated 360°
- Manual override, latching